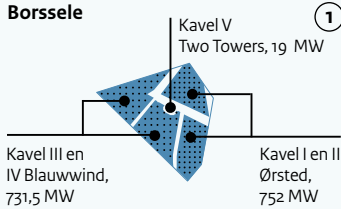
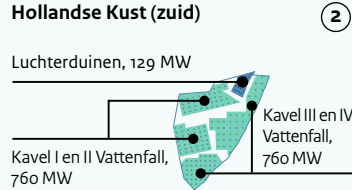


Routekaart Windenergie op zee

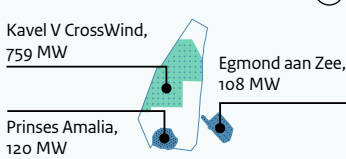
Borssele



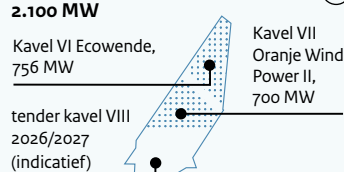
Hollandse Kust (zuid)



Hollandse Kust (noord)

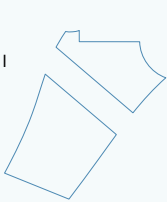


Hollandse Kust (west)



IJmuiden Ver

6.000 MW
tender(s) kavels I t/m IV: 2023
tender(s) kavels V en VI: 2025



Nederwiek

6.000 MW
tender kavel I: 2025
tender(s) kavels II en III: 2026 (indicatief)



Ten noorden van de Waddeneilanden

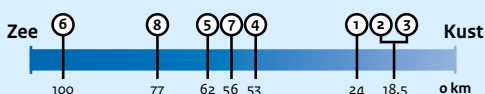
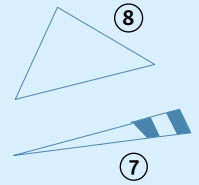
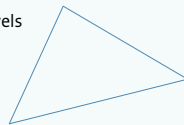
700 MW
tender 2026/2027 (indicatief)



Gemini 600 MW

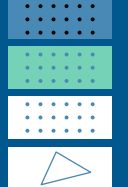
Doordewind

4.000 MW
tender(s) kavels I en II: 2027 (indicatief)



Legenda

- Operationele windparken ~2,5 GW
- Windparken in aanbouw ~2,3 GW
- Windparken in ontwikkeling ~1,5 GW
- Geplande windparken ~15 GW



Totaal ~21,5GW